

1-16-2012

## Grouper : 2012 : 01 : 16

University of South Florida St. Petersburg. Division of Student Affairs.

Follow this and additional works at: [https://digital.usfsp.edu/studentaffairs\\_life\\_engagement](https://digital.usfsp.edu/studentaffairs_life_engagement)

---

### Recommended Citation

University of South Florida St. Petersburg. Division of Student Affairs., "Grouper : 2012 : 01 : 16" (2012). *Student Life and Engagement*. 36.  
[https://digital.usfsp.edu/studentaffairs\\_life\\_engagement/36](https://digital.usfsp.edu/studentaffairs_life_engagement/36)

This Other is brought to you for free and open access by the Student Affairs at Digital USFSP. It has been accepted for inclusion in Student Life and Engagement by an authorized administrator of Digital USFSP.

# The Grouper

## Dr. Martin Luther King, Jr.:

- “Nothing in all the world is more dangerous than sincere ignorance and conscientious stupidity.”



Submissions from your organization must be received by 5pm on Sunday to be included in Monday's GROUPER.

Submissions may include calendar items, awards, or anything else newsworthy.

To submit an item for inclusion in the newsletter, simply go to:  
<http://usfsp.edu/grouper>  
and complete the form.

### Questions?

Contact Ralph Reid at  
[roreid@usfsp.edu](mailto:roreid@usfsp.edu) or call  
727-873-4500.

*University of South Florida St. Petersburg*

## Waterfront Limited Hours

The Waterfront is currently open during Watercraft Limited Hours (pool closed) until January 29th, 2012. Watercraft ONLY is available by appointment Monday/Wednesday/Friday between 1:00 pm - 5:00 pm.



Beginning January 30th, the Waterfront will resume the Routine Hours (both watercraft & pool/aquatics) of Sunday - Monday (7 days/week) from 11:00 am - 5:00 pm.

Look for our updated semester information at Get on Board Day.

## First Meeting CCM

Welcome back to school and to a new calendar year, 2012. On Sunday, January 22nd, the Catholic Campus Ministry (CCM) will meet for the 8:00 a.m. Mass at St. Mary Our Lady of Grace Church, have breakfast afterwards, and then carpool to St. Vincent dePaul Society to participate in feeding the homeless in St. Petersburg. We hope you all can join us in this wonderful outreach ministry on that day. Please, if you can be with us, email Father Mario at [ofmmario@gmail.com](mailto:ofmmario@gmail.com) or Brittany Lyp at [blyp@mail.usf.edu](mailto:blyp@mail.usf.edu) before the 22nd of January. Feel free to email us with any questions or for information about the organization!

## January Student Health 101

The January issue of Student Health 101 is now available!  
Access it at: <http://readsh101.com/stpt.html>

STUDENT  
health101™

Here are some of the great articles you'll find this month:  
New Ways to Get Fit  
Start Your Summer Job Hunt Now  
Join In: Helping Yourself While Helping Others  
Social Media Check-Up: Making Smart Connections  
It's Your Life: Take Control

And don't forget, you can enter to win January's \$1,000 cash prize just for reading Student Health 101!

Thanks for your time,  
Center for Counseling, Health & Wellness

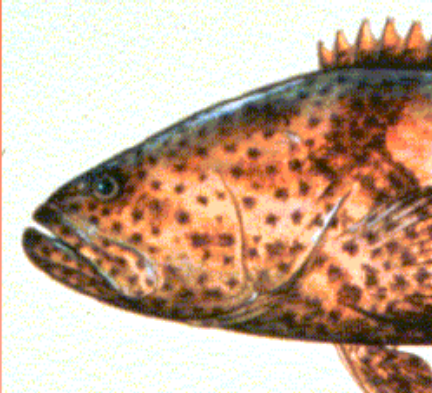
USFSP



## Signature Events Form Available

Signature events applications are now available for clubs in the SG office. A signature event is a collaboration of 3+ organizations. The maximum amount the clubs can request is \$2,000. This form must be turned into the Student Services and Audits Committee no later than 20 business days prior to the signature event. If you have any questions, please email Andrea Inman at [andrea5@mail.usf.edu](mailto:andrea5@mail.usf.edu).

# The Grouper



## This week's catch....

### Week of January 16th

Wednesday, January 18, 2012 from 10:30 am to 2:00 pm at Harborwalk

#### Get On Board (GOB) & Civic Engagement Fair

Join the Department of Student Life & Engagement for Get On Board! GOB is an opportunity for USFSP students and faculty/staff to learn about how to get involved on campus. Visit tables from student organizations and services, and hear about great events happening all year long! GOB happens concurrently with the Bishop Center for Ethical Leadership and Civic Engagement's Civic Engagement Fair, which showcases many community-partner organizations that are looking for student volunteers and interns. For more information about GOB, contact Ryan Hughes at [rhughes3@mail.usf.edu](mailto:rhughes3@mail.usf.edu). For more information about the Civic Engagement Fair, contact Dr. Judithanne Scourfield McLauchlan at [jsm2@usfsp.edu](mailto:jsm2@usfsp.edu).

Wednesday, January 18, 2012 from 7:00 pm to 9:00 pm at Harbor Hall (HBR) Gallery

#### 1st Annual MLK Recognition Ceremony

Join the Office of Multicultural Affairs for a celebration of Dr. Martin Luther King, Jr. and recognition of USFSP students that promote his vision. Event features performances by Unspoken Thoughts with keynote address by Angela Rouson. An RSVP is required for this event. If interested in attending, RSVP to [jovanna@mail.usf.edu](mailto:jovanna@mail.usf.edu) or [traj@usfsp.edu](mailto:traj@usfsp.edu) by Tuesday, January 17th.

Thursday, January 19, 2012 from 7:30 am to 9:00 am at Davis Memorial Hall (DAV) 130

#### Coffee and Conversation

Coffee and Conversation is an opportunity for leaders of area non-profit organizations to come together to share conversation as well as hear from experts in a variety of fields specifically chosen to benefit non-profit leaders and their organizations. Come enjoy a good cup of coffee and learn from our experts how to augment or improve what you're already doing today.

Speaker for this month is: Delquanda Turner from the Juvenile Welfare Board of Pinellas

To RSVP for this event, go to <http://usfsp.edu/coffee>.

Thursday, January 19, 2012 from 9:00 pm to 11:00 pm at Davis Memorial Hall (DAV) 130

#### HAB presents Comedy Night featuring Chris Killian and Jessi Campbell

Join Harborside Activities Board (HAB) for a night of laughter with comedians Chris Killian and Jessi Campbell. For more information, contact Ryan Hughes at [rhughes3@mail.usf.edu](mailto:rhughes3@mail.usf.edu).